

Sydney 2030

Towards an **ethical,
sustainable &
resilient** city...

Kate Deacon
City of Sydney



City of Sydney local government area

- 242,000 residents
- 502,000 workers
- \$132b economy
- More than 1.2m people in the LGA every day
- 26 sq km area

In 2006 we started with the question

***“What kind of city do we
want Sydney to be in
2030?”***



97%

CITY OF SYDNEY



city of

green global

"let's make
sydney
green
global
connected"

Clover Moore MP
Lord Mayor



Sustainable

connected

Ten targets to make the city more sustainable

1

70 per cent reduction in greenhouse gas emissions based on 2006 levels by 2030 and by 2050, achieve a net zero emissions city.

2

50 percent of electricity demand met by renewable sources; zero increase in potable water use from 2006 baseline, achieved through water efficiency and recycled water; total canopy cover increased by 50 per cent from 2008 baseline.

3

There will be at least 138,000 dwellings in the city (including 48,000 additional dwellings compared to the 2006 baseline) for increased diversity of household types, including greater share of families.

4

7.5 per cent of all city housing will be social housing, and 7.5 per cent will be affordable housing, delivered by not-for-profit or other providers.

5

The city will contain at least 465,000 jobs (including 97,000 additional jobs) compared to the 2006 baseline) with an increased share in finance, advanced business services, education, creative industries and tourism sectors.

6

Trips to work using public transport will increase to 80 per cent, for both residents of the city and those travelling to the city from elsewhere.

7

At least 10 per cent of total trips made in the city are by bicycle and 50 per cent by pedestrian movement.

8

Every resident will be within reasonable walking distance to most local services, including fresh food, childcare, health services and leisure, social, learning and cultural infrastructure.

9

Every resident will be within a 3-minute walk (250 m) of continuous green links that connect to the harbour foreshore, harbour parklands, Moore or Centennial or Sydney parks.

10

The level of community cohesion and social interaction will have increased based on at least 65 per cent of people believing most people can be trusted.

A framework for action - ten strategic directions

1

A globally competitive and innovative city

2

A leading environmental performer

3

Integrated transport for a connected city

4

A city for walking and cycling

5

A lively and engaging city centre

6

Resilient and inclusive local communities

7

A cultural and creative city

8

Housing for a diverse community

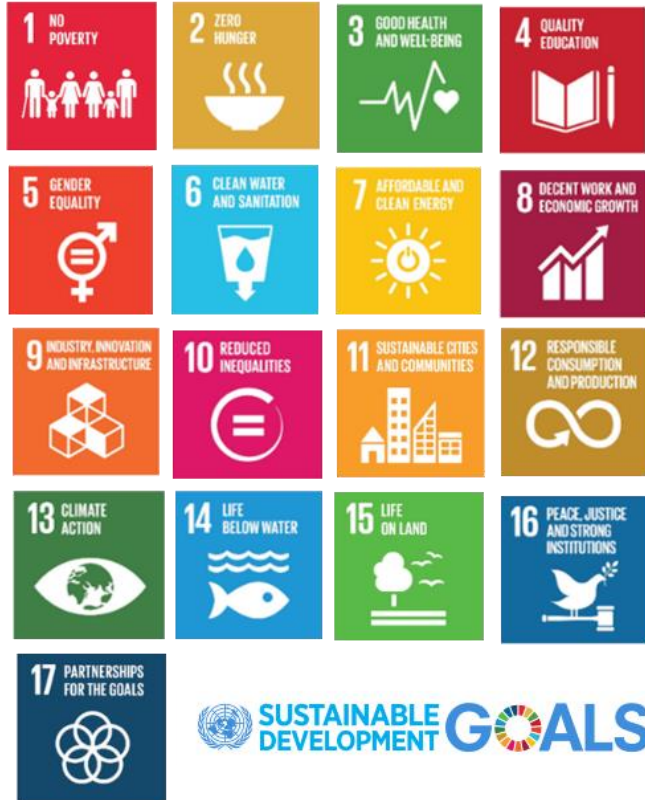
9

Sustainable development, renewal and design

10

Implementation through effective governance and partnerships

Aligned with international frameworks



city of villages



Green

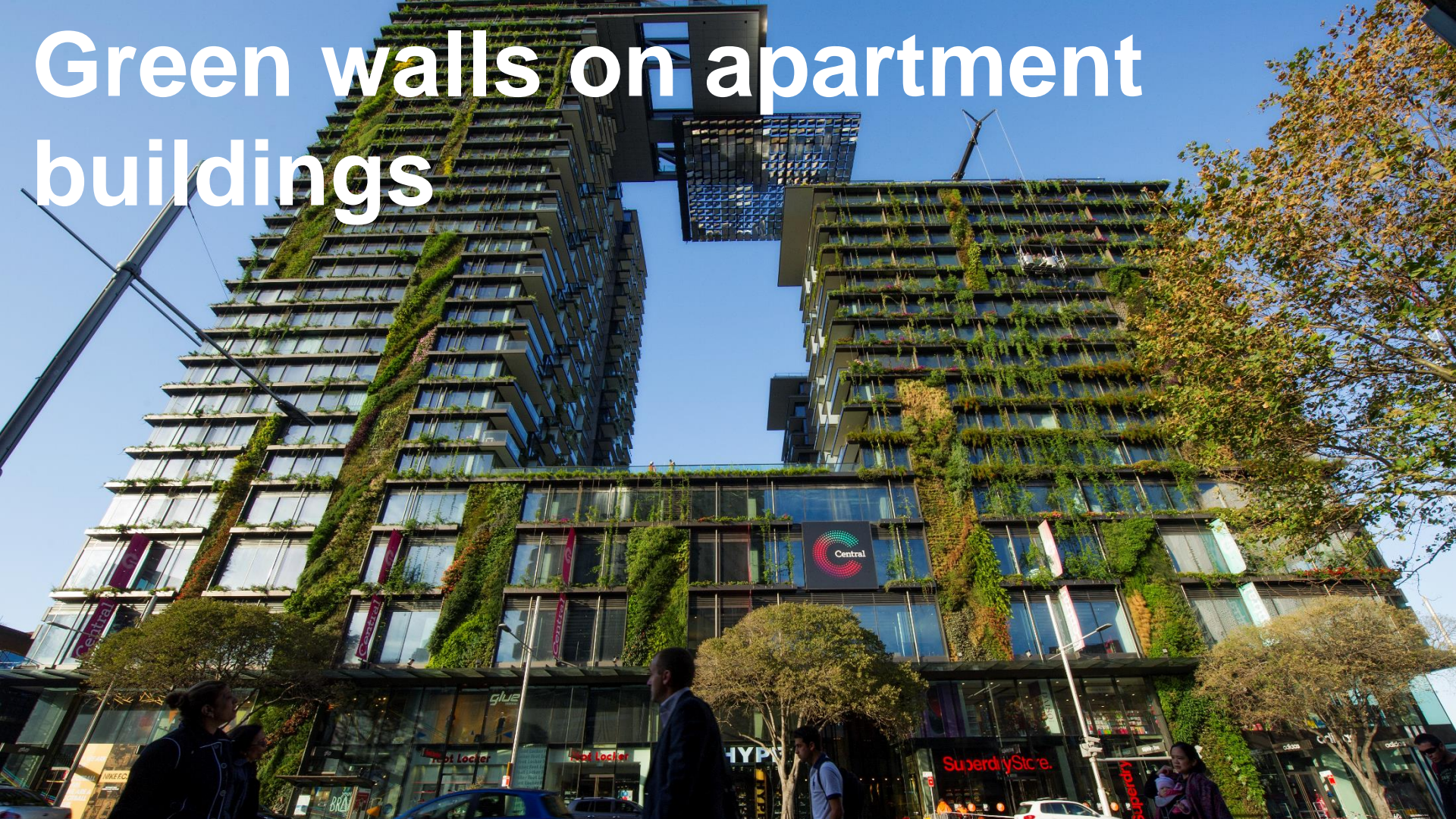


Solar panels on public buildings



**Batteries store
locally generated
power**

Green walls on apartment buildings



Green open space





**Street rain gardens filter
stormwater**

Street raingardens create habitat for wildlife



Community gardening



Building efficiency projects



Implementation through partnerships



BETTER
BUILDINGS
PARTNERSHIP





Global

Tourist services



Major events like Lunar New Year



**A safe, vibrant
24 hour economy**





**Well maintained
public domain**

Supporting international students



Small business education



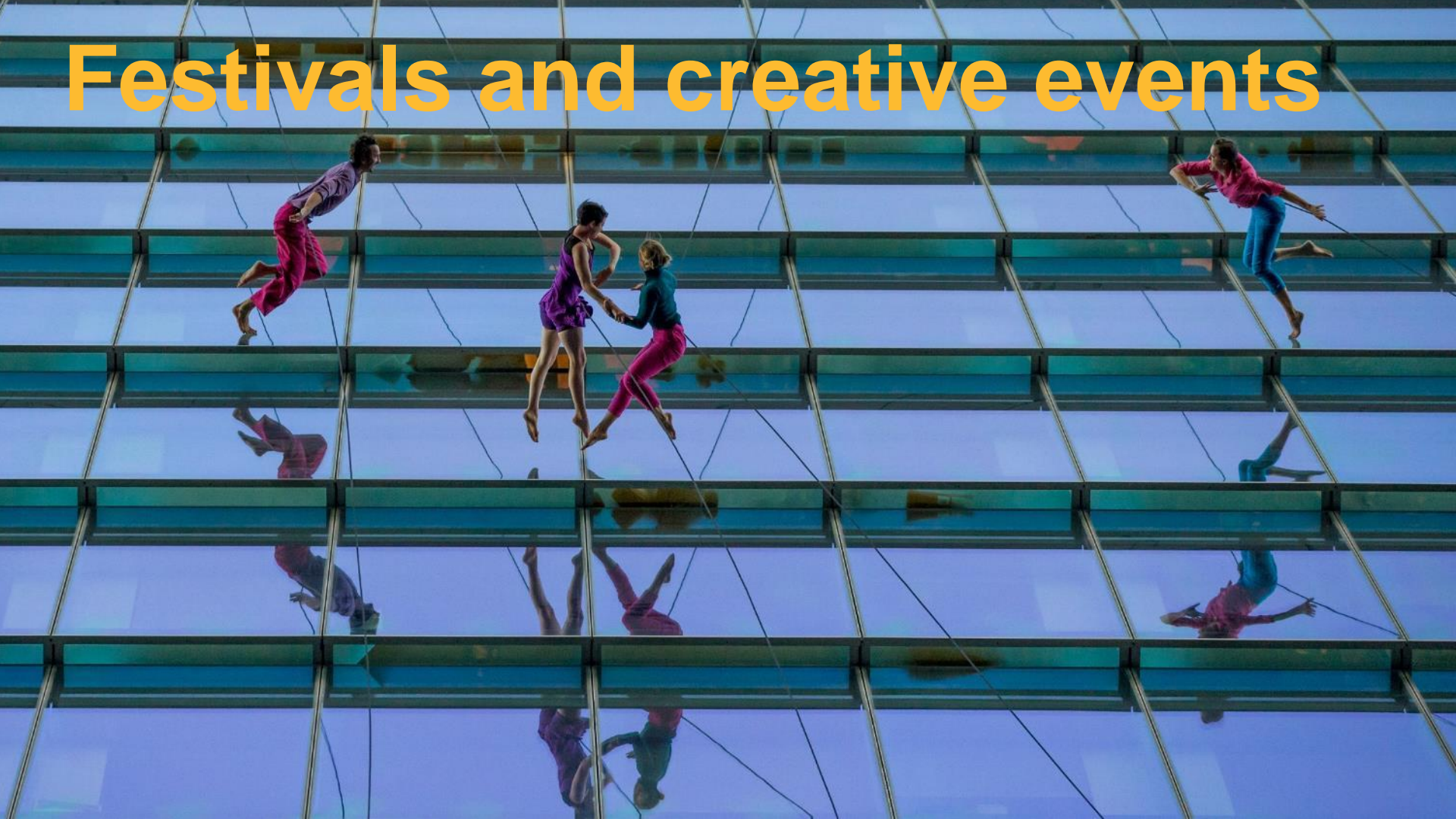
Cultural infrastructure



Construction hoardings as public art



Festivals and creative events



Art in laneways





Connected



Modern public transport projects

...ring 9265
quote location number



**Tactile
wayfinding signs
for vision impaired**

A woman with dark hair, wearing a bright red dress and a black backpack, is walking on a paved sidewalk. She is smiling and holding a small chalkboard with both hands. The chalkboard has handwritten text in white chalk. In the background, there are other pedestrians, a tree, and a white van. The scene is outdoors and appears to be a city street.

I'm walking
from Town Hall
to Pyrmont.
It takes 20mins
#Sydneywalks Susana

Active transport

Bike path network



Changing community demographics



World class aquatic and fitness facilities



Co-design the city

Follow the route and answer the questions as you go along

Zone A

How does this zone make you feel?
 excited scared
 bored relaxed other

What could you do here?

Make an obstacle course with bridges you have to jump over.

Zone E

How does this zone make you feel?
 excited scared other
 bored relaxed

What could you do here?

Make water works like the ground in Darling Harbour.

Zone D

How does this zone make you feel?
 excited bored relaxed other

What could you do here?

Clean up the ~~leaves~~ leaves and put rope through the trees to climb.

Zone B

How does this zone make you feel?
 excited scared
 bored relaxed other

What could you do here?

Zone C



Community infrastructure



Our city is a city for its people

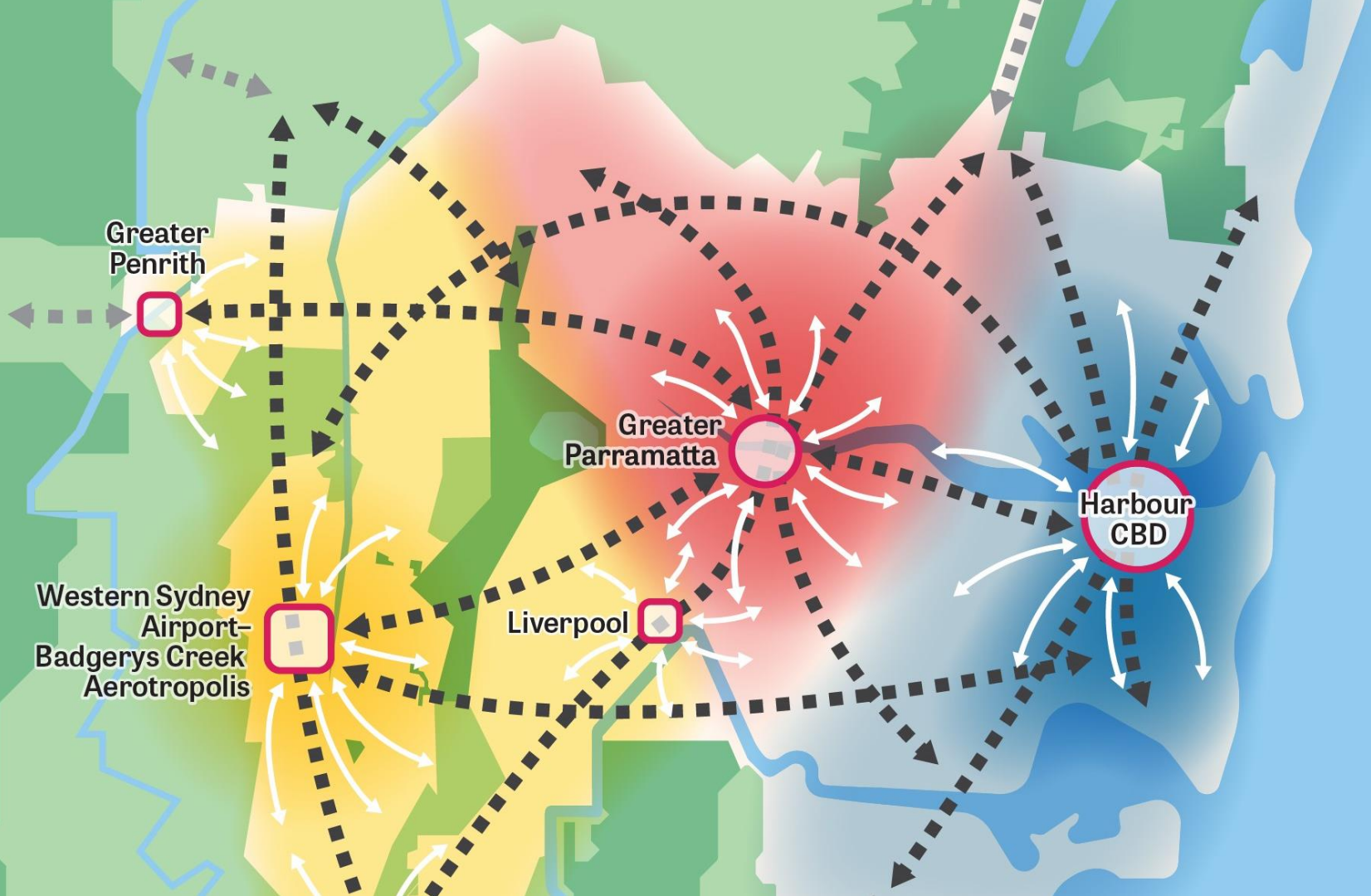




4.7
million
2016

6.4
million
2036

8
million
2056



A map of Sydney, Australia, showing various regions outlined in red. The regions labeled are Canada Bay, Burwood, Strathfield, Inner West, Sydney, Woollahra, Waverley, and Randwick. Three overlapping circles in the bottom left contain projection data for the year 2036: an orange circle for new homes, a dark blue circle for new residents, and a green circle for jobs in the Harbour CBD.

Canada Bay

Burwood

Strathfield

Inner West

Sydney

Woollahra

Waverley

Randwick

**157,000
new
homes
2036**

**325,000
new
residents
2036**

**166,000
jobs
Harbour
CBD
2036**




**166,000
jobs
Harbour
CBD**

**15,500
Green
Square /
Mascot**



Sydney
ranked 23,
in 2019
Startup
Genome



**1.7
million
daily by
2036**

**2 million
daily by
2050**



Trees can
reduce the
temperature
on the
footpath by up
to 15 degrees
on summer
days

Health and
wellbeing
benefits flow
from access
to nature for
2 hours a
week



13.5% in
rent
stress,
8% in
mortgage
stress

5-10
years for
'priority'
access to
social
housing

In 2016,
38,000
homeless in
NSW, 5,000
in City of
Sydney



Lack of
space and
cost
impacting
on creative
workforce



3.1
degrees
rise by
2070

1 in 50
year
events will
become in
in 20 year
events

Increase
from 3.7
to 15 days
each year
over 35
degrees



Thank you.

city of villages



Sydney 2030 Green Global Connected