



臺北市政府環境保護局

Department of Environmental  
Protection Taipei City Government

2019永續發展2030+國際論壇  
Sustainable Development 2030+  
International Forum



PHOTO/FTIS

# Taipei City Voluntary Local Review: The Path to Sustainability

Jen-Mao Fan Chiang  
Specialist, Department of Environmental Protection  
Taipei City Government

Sep. 5, 2019



# Glance at Taipei



## Nature and population

Area

**271.8** km<sup>2</sup>

Population

**2.67** million people

Population density

**9,818** people/km<sup>2</sup>

Annual precipitation

**1,600** mm

Annual average temperature

**23.9** °C

## Culture and humanities

Public libraries

**44**

Monuments

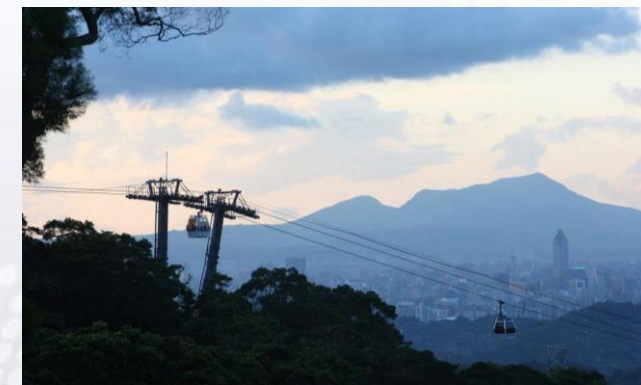
**158**

Art exhibitions

**7,042**

Tourists visiting

**9.76** million



# 宜居

yi

jyu



# 永續

yong

syu

## Livable



## Sustainable



The vision of Taipei City Government is  
“Taipei becomes a livable and sustainable City”  
meaning citizen should live well and longer.

Mayor Wen-Je Ko





# Sustainable Development Goals

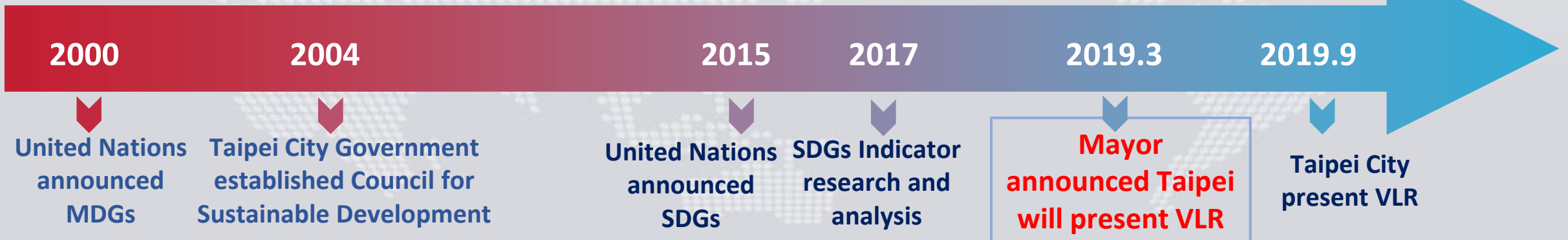


- Mayor Ko announced Taipei will present Taipei City Voluntary Local Review(VLR) in New York this March.
- Reference to the method and report structure of New York City Voluntary Local Review(VLR).



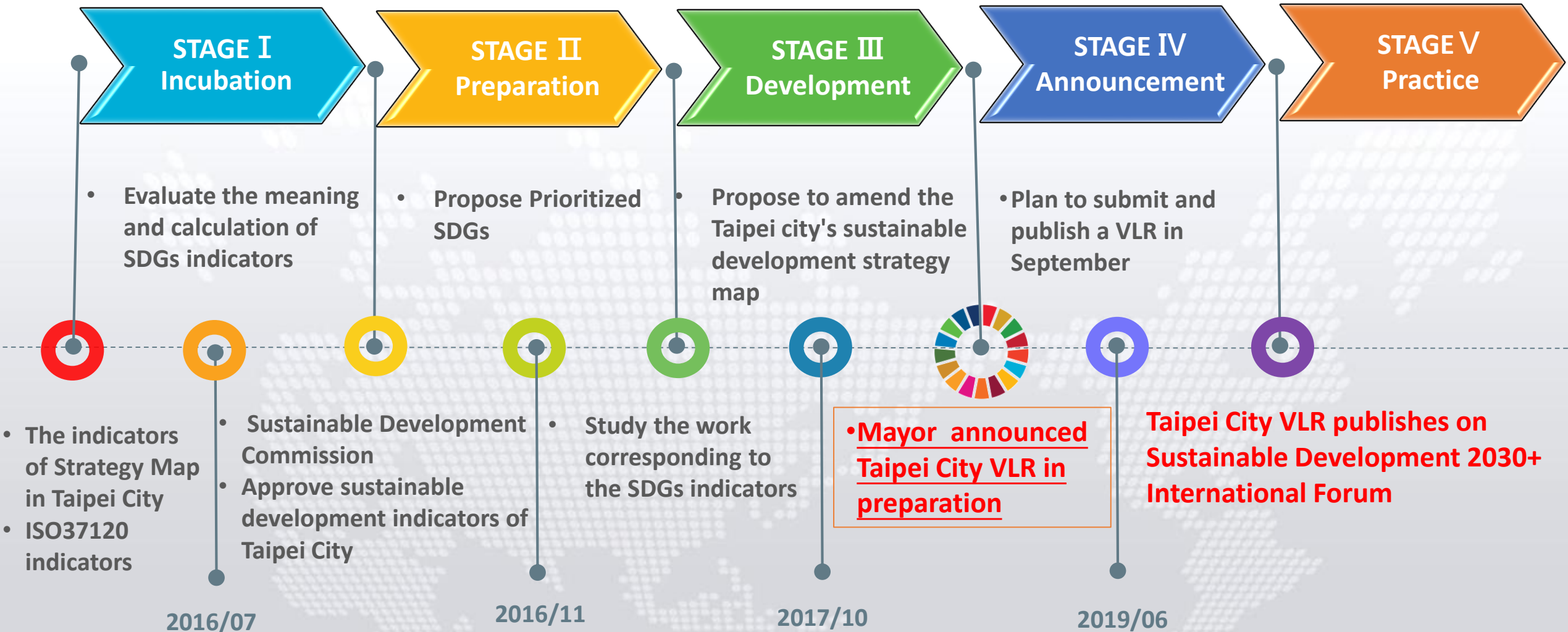
「Follow」 the Millennium Development Goals

「Continue」 the Sustainable Development Goals



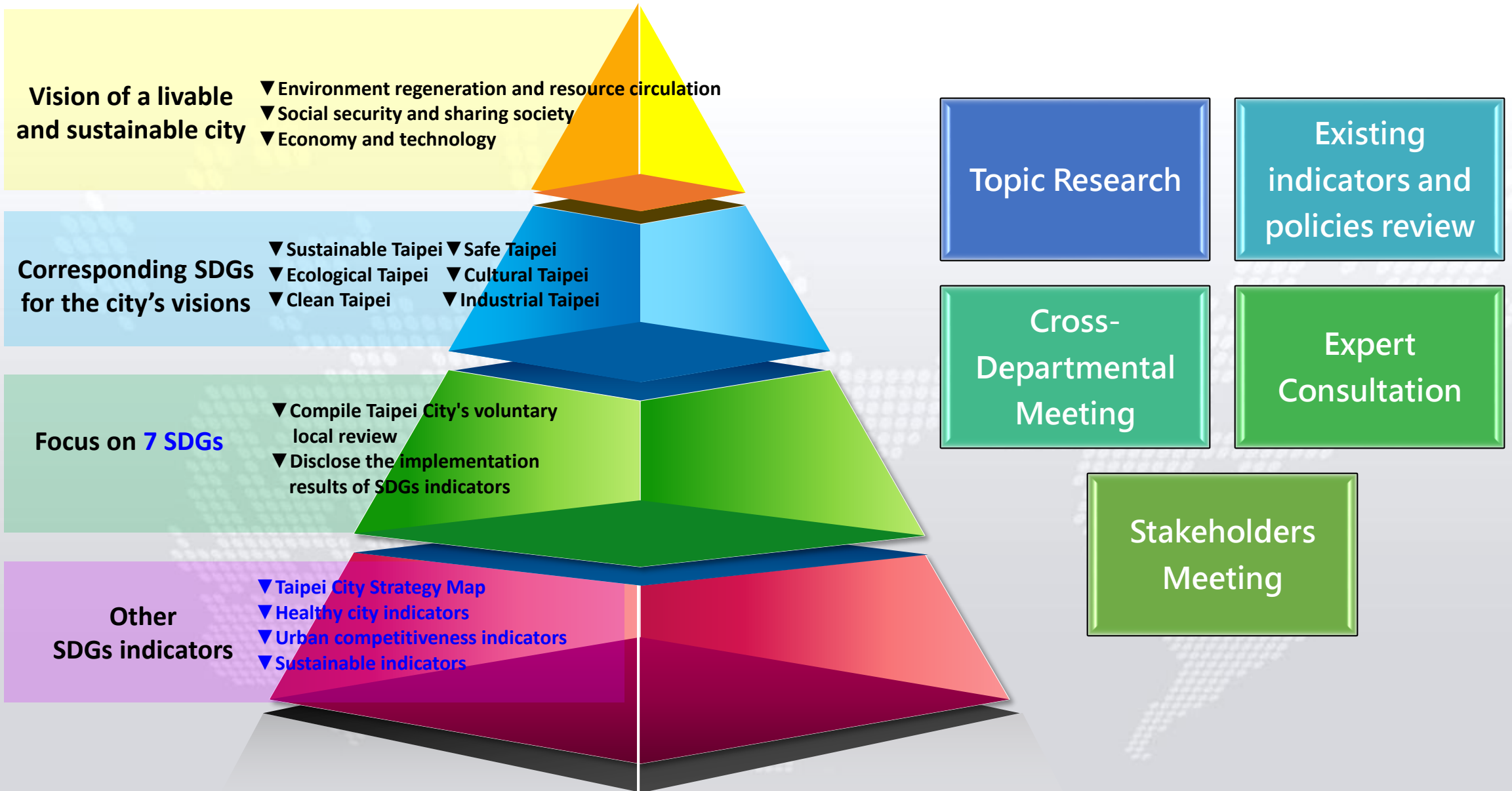


# Process of Taipei City VLR





# Compile Method of Taipei City VLR





# Taipei City VLR



## Prioritized Goals(7 GOALS)



# Reduce by one third premature mortality from non-communicable diseases through prevention

	Past	Now	Target
Immunization coverage rate(%)	38 (2017)	40 (2018)	54.25 (2030)
Cancer screening coverage rate(%)	45.4 (2017)	46.5 (2018)	50.5 (2030)







# Substantially increase health financing and the recruitment, development, training and retention of the health workforce



	Past	Now	Target
<b>Physicians per 100,000 population (people)</b>	<b>546.4 (2017)</b>	<b>546.6 (2018)</b>	<b>526.8 (2020)</b>

**ISO 37120 Physicians per 100,000 population**  
 Indicator of urban health and progress, physicians per 100,000 population of Taipei City is higher than international cities such as Toronto, London, Dubai.

Source : Department of Budget, accounting and statistics, Taipei City Government



# Achieve universal and equitable access to safe and affordable drinking water for all



	Past	Now	Target
<b>Tap Water Quality Qualified Rate(%)</b>	<b>100</b> (2017)	<b>100</b> (2018)	<b>100</b> (2030)
<b>Tap water supply system leakage rate(%)</b>	<b>14.18</b> (2017)	<b>13.52</b> (2018)	<b>10</b> (2025)

## Water supply network improvement strategy

- Pipeline replacement
- Water pressure management
- Active detection
- Rate and quality of leaking water repair

## Provide a stable tap water source

- Reservoir stable water supply plan
- Reservoir management plan
- Reservoir operation plan



# Halving the proportion of untreated wastewater and substantially increasing recycling and safe reuse rate



	Past	Now	Target
<b>River biochemical oxygen demand in line with water classification benchmark achievement rate (%)</b>	-	93.05 (2018)	95.0 (2019)
<b>Percentage of city population served by wastewater collection(%)</b>	81.43 (2017)	82.81 (2018)	86.98 (2030)

# Build Taipei Energy Hill, Revitalize landfill use

**Green Energy**



	Past	Now	Target
Annual increase in photovoltaic installed capacity(kWp)	3,752 (2017)	9,951 (2018)	3,100 (2022)
Annual photovoltaic power generation(kWh)	8,094,221 (2017)	17,174,162 (2018)	27,375,000 (2022)

# Ensure access to affordable, reliable, sustainable and modern energy

## Energy Saving

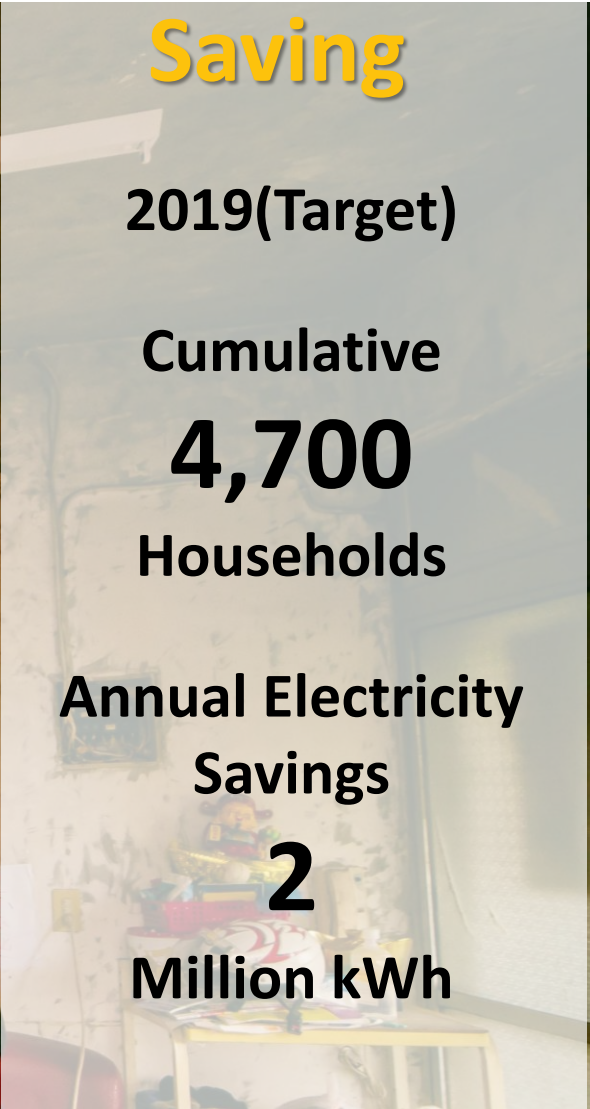
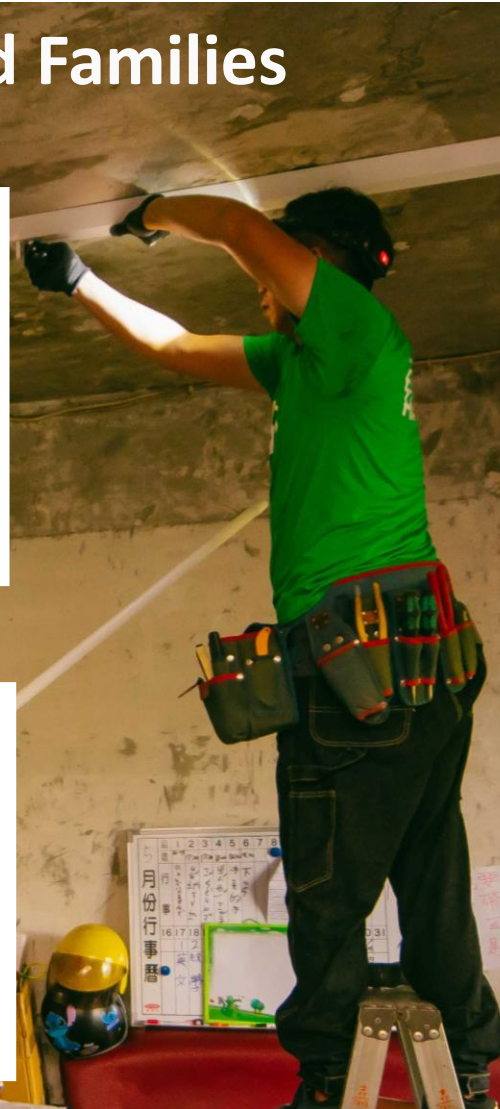
### Energy Welfare Plan for Disadvantaged Families

**2,700**  
Households  
Lights Replacement

**20,000**  
Lights  
Replacement

Annual Electricity  
Savings  
**970,000 kWh**

Saves Bills  
**1,200**  
NTD/Every  
Household



2019(Target)  
Cumulative  
**4,700**  
Households

Annual Electricity  
Savings  
**2**  
Million kWh

# Provide access to safe, affordable, accessible and sustainable transport systems for all



14 operators

290 routes

1.3 million passengers



117 stations

131.1 km

2.16 million passengers



400 rental point

13,072 bikes

27 million times

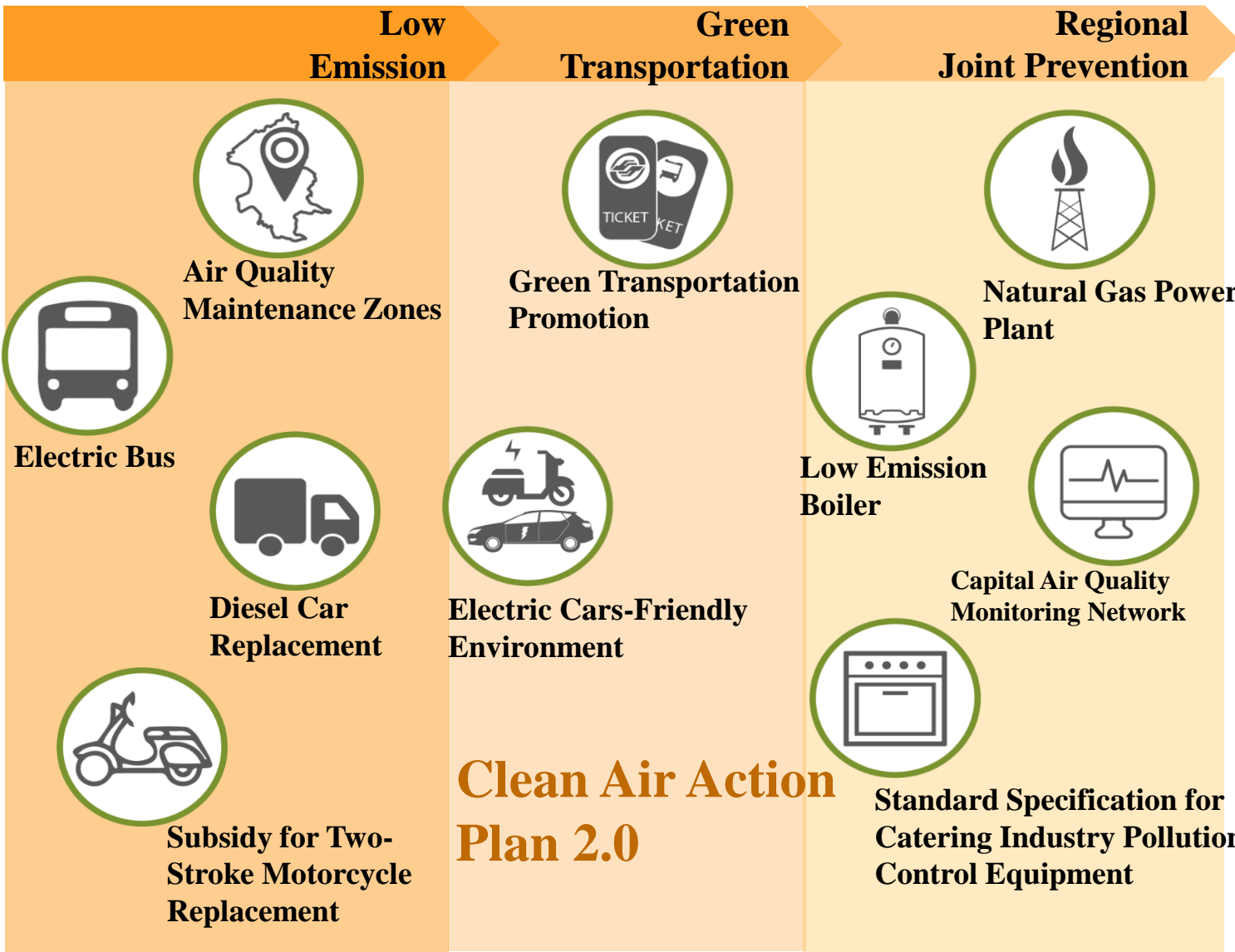
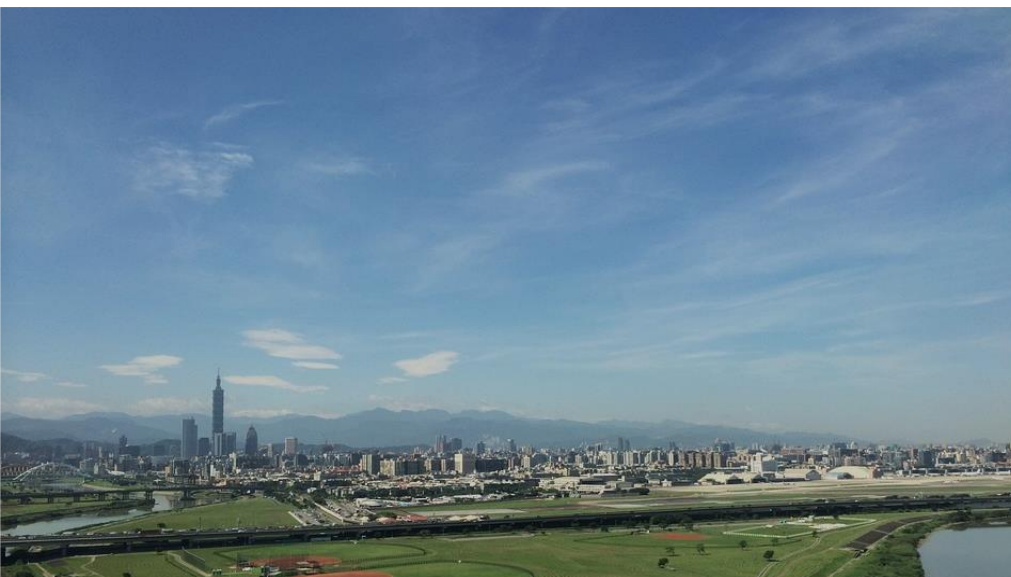
## UBike

	Past	Now	Target
Annual public transport passengers per capita (Number of public transport trips/city population)	-	463.24 (2018)	486.62 (2021)

# Reduce the adverse per capita environmental impact of city

## Annual average of PM<sub>2.5</sub> (µg/m<sup>3</sup>)

Past	Now	Target
<b>15.3</b> (2017)	<b>14.6</b> (2018)	<b>10</b> (2030)



# Achieve the environmentally sound management of chemicals and all wastes throughout their life cycle

Promoting Plastic Reduction

Dual-use Shopping Bags

Ban on Single-use Tableware

Ban on Melamine Tableware

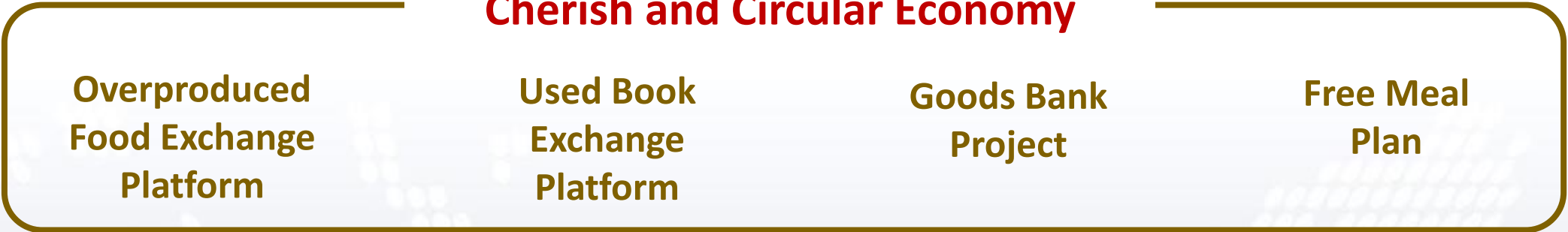


	Past	Now	Target
Hazardous waste collection(kg/per person per year)	3.22 (2016)	3.49 (2018)	<3 (2030)
Recycling rate (%)	62.02 (2017)	64.42 (2018)	65.50 (2030)



# Substantially reduce waste generation through prevention, reduction, recycling and reuse

## Cherish and Circular Economy



Overproduced Food Exchange Platform

Used Book Exchange Platform

Goods Bank Project

Free Meal Plan



**Invitation to promote**  
Invite the vendors to participate

**Food donation and collection**  
Market vendors donate fresh foods

**Cooking and serving**  
Arrange cooking group and matched social units to pickup these food

**Shidong Market**  
2016/07

**South Gate Market**  
2016/12

**Xinglong Market**  
2017/08

**Chengde Market**  
2017/11

**Yongchun Market**  
2017/12

**Muxin Market**  
2018/06

Target for 2022 accumulation

120,000 participated

# Strengthen resilience and adaptive capacity to climate-related hazards and natural disasters



Green Wall



Green Building



Taipei Energy Hill



Permeable Pavement

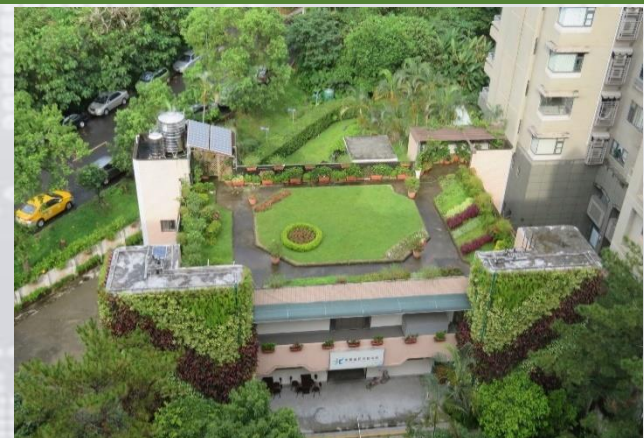
To tackle climate change, not only **Mitigation** but also **Adaptation**, and improve the urban resilience is needed.



Green Building



Rainwater Recycling



Green Roof

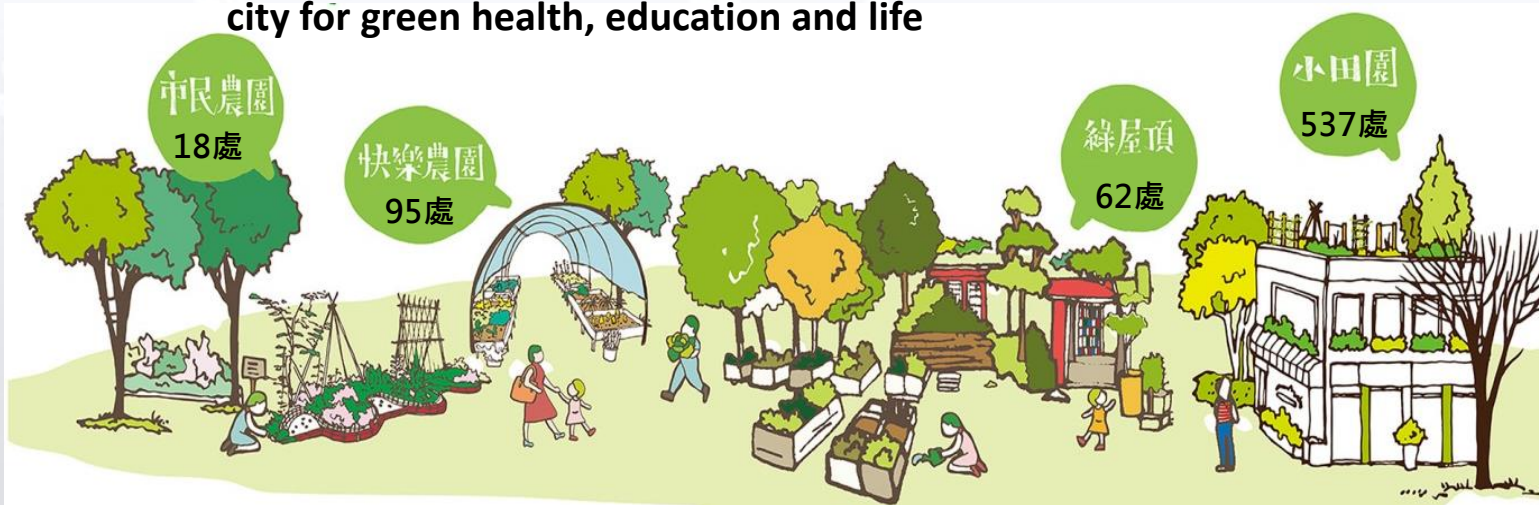


Ribbon Plant

# Promoting A Garden City Policy

## Garden City

So far, the area of the garden site area has exceeded **180,000m<sup>2</sup>**, and the cultivation people over **160,000**, expecting to build Taipei City as a garden city for green health, education and life



## Eco-city

Choose **12 Natural ecological parks as demonstration sites** for reducing human disturbance and enhance urban biodiversity



Daan Fuyang Park



Wenshan Muzha Park



Zhongshan Rongxing Park



Shilin Residence Park



Eco Park Press Conference



Roof space as a community farm



# Founded to enhance civil consciousness and promote citizens' participation in public policies and public affairs

## i-Voting

- Transform a proposal, discussion into a real case for voting, all of work was done through the platform of website.



## Environmental Education from Expert Teams

- Learn the effects caused by PM<sub>2.5</sub> from medical group.



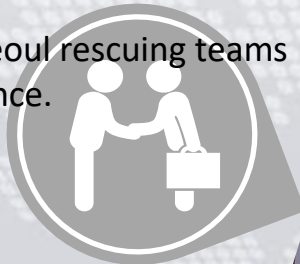
## Participatory Budgeting

- There are 171 project from 2015 to 2018.



## Support the Outside Activities Away from Taipei

- Practice with Tokyo, Seoul rescuing teams to sharing the experience.



## International Partners

- GO SMART
- ICLEI
- Global Covenant of Mayors for Climate & Energy
- UCLG
- UEN





# Taipei City Voluntary Local Review (VLR) Officially published in 2019





**Thank you  
for your attention**